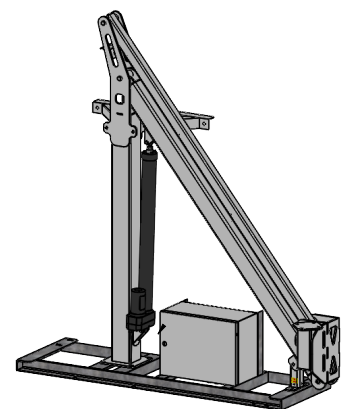
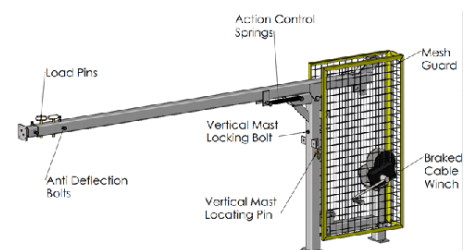


# FIND YOUR BUSINESS SOLUTION HERE



CBO designed and developed elevation solutions offer our clients alternatives to the traditional commercially available products. Proudly Australian designed, Australian made for Australian conditions.

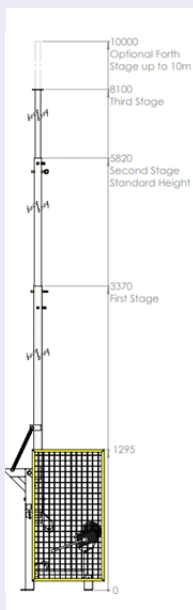
Highlighting CBO's commitment to the everchanging needs of the technologies to be elevated, we have designed and developed a small range of masts to augment the telescopic solutions we distribute. The products we've developed are specifically for light to medium device loads and offer ground level access to devices, time effective, single person deployment techniques and a high level of durability to cope with the rigours of harsh and remote environments. The designs encompass many years of in-field operational experience in delivering and integrating communications equipment onto masting solutions and are supported by a team of dedicated engineers and technicians.





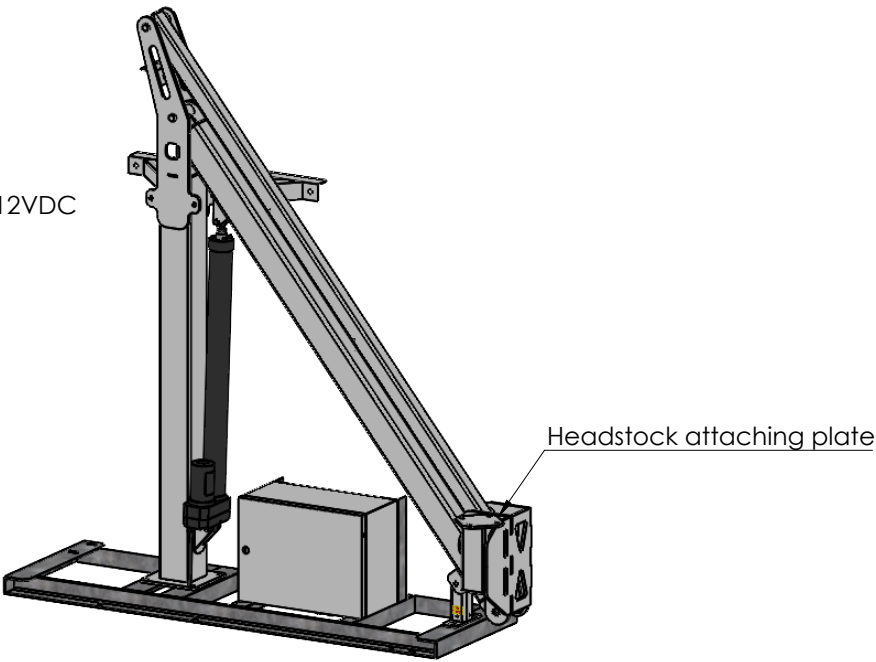
The CBO folding mast is available in two variants to cater for the most common elevation requirements utilised in small form mobile applications.

Model Number	Operation	Height*	Max load
5 EAFM2	Single Electronic Actuator	6m	100kg
8 HFM5	Dual Hydraulic	8m	100kg

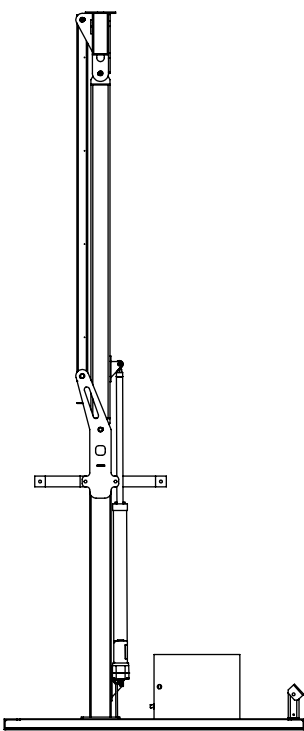


The CBO cable swing mast is based on a low cost concept in common use throughout the industry. CBO realised the use case for this type of elevation solution and invested in an R&D program to evaluate and improve on the design. The result is an engineered product where we can be certain the risks associated with the swing mast are minimised and managed effectively.

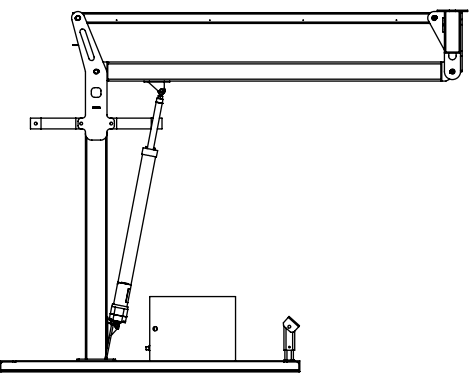
Model Number	Operation	Height*	Max load
CSWM-4.1	Manual	4m	30kg
CSWM-6.2	Manual	6.4m	25kg
CSWM-8.3	Manual	8.7m	25kg
CSWM-10.4	Manual	10m	20kg



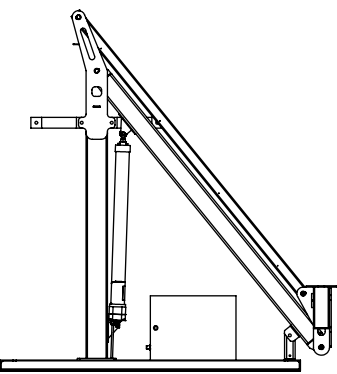
Electric Actuated 24VDC OR 12VDC  
Hydraulic Actuated 24VDC



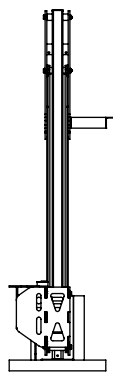
DEPLOYED



SWING RADIUS



NESTED FRONT



NESTED SIDE



D		
C		
B		
A	Drawings Published For Review	220/01/2021
REVISION	DESCRIPTION	DATE

UNLESS OTHERWISE SPECIFIED: DIMENSIONS ARE IN MILLIMETERS		FINISH: <b>Powder Coated</b>	DEBUR AND BREAK SHARP EDGES	JOB NUMBER: <b>101315</b>
DRAWN	NAME Julio Jaramillo	SIGNATURE	DATE 20/01/2021	TITLE: <b>2 Section Actuated Folding Mast General Assembly</b>
CHK'D	Jared Groves		20/01/2021	
APPV'D	Mark Hollis		20/01/2021	
FILE NAME: 101315-GA-0001 - Assembly - CBO - EAFM-3 - Rev B		MATERIAL: <b>Steel</b>		DWG NO. <b>101315-GA-0001-P1</b>
This drawing cannot be reproduced without the prior written consent of the Managing Director of CBO Telco Pty. Ltd. All intellectual property contained within this drawing remains the property of CBO Telco Pty. Ltd. ABN:68 631 536 488		SCALE:1:25		A3
		SHEET 1 OF 1		